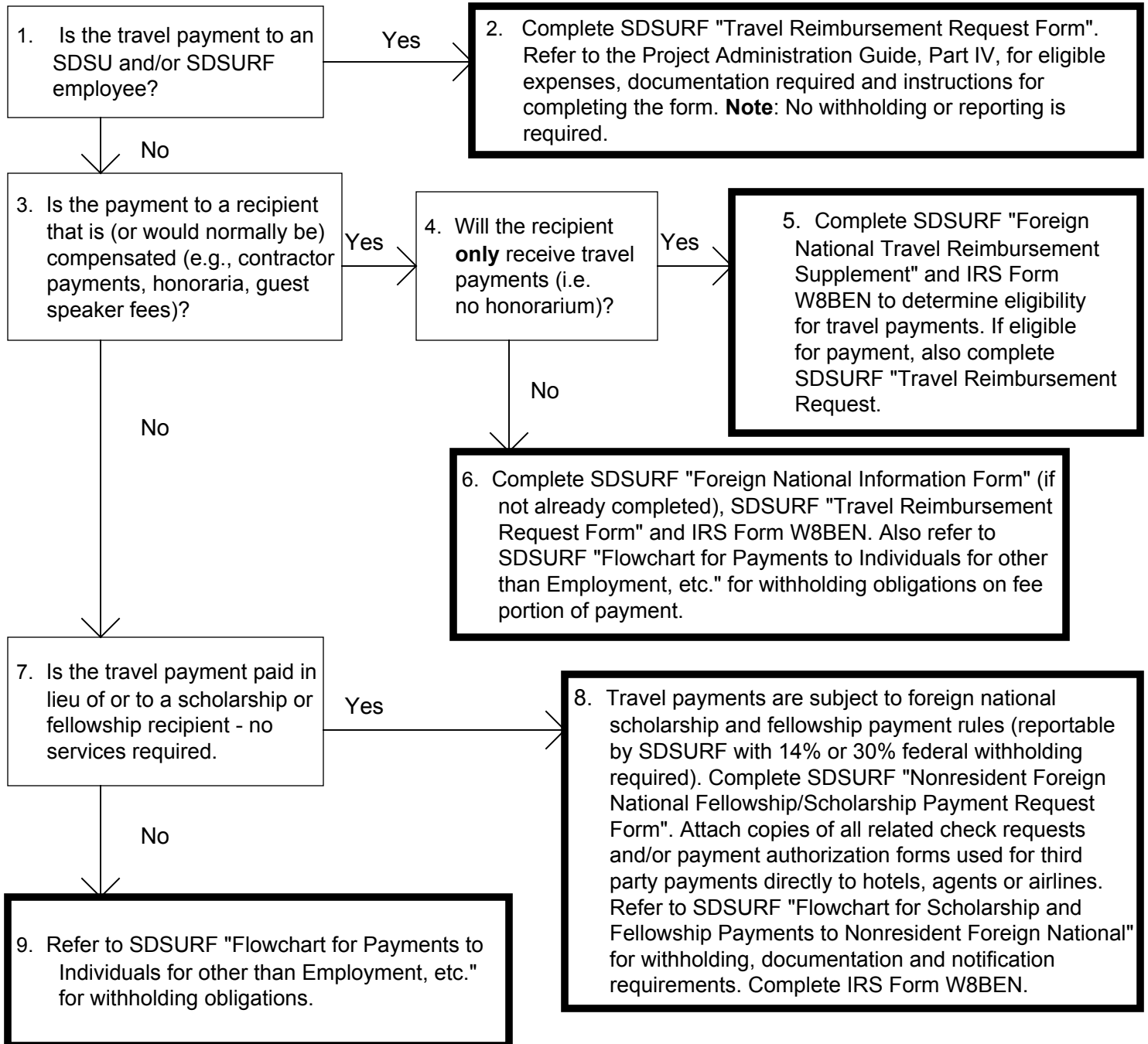


**San Diego State University Research Foundation  
Flowchart for Travel Payments  
to Nonresident Foreign Nationals**



**IMPORTANT REMINDERS:**

**A WB or B-1 visa holder can be reimbursed travel expenses even if they do not meet the 9, 5, 6 rule.**  
**A WT or B-2 visa holder cannot be reimbursed travel expenses if they do not meet the 9, 5, 6 rule.**  
 Generally, all other foreign recipients must be sponsored by SDSU in order to receive travel payments.  
 Many visa types do not allow the foreign recipient to receive compensation or travel reimbursements.

**PRIOR COPIES OF THIS FLOWCHART SHOULD NOT BE USED**